



KLT-USB1A-OVM6946 V1.0

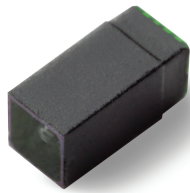
OmniVision OVM6946 USB 接口 固定焦距 400x400 半 VGA 摄像头模组



摄像头模组型号	KLT-USB1A-OVM6946 V1.0	
图像感光芯片	OVM6946	输出格式: MJPG, YVY2
焦距	0.418 mm	Frame Per Second
像素	400 x 400	30 FPS at 400 x 400
可视角度	120°	支持的操作系统
镜头类型	1/18 英寸	Windows 7, 8.1, 10, Vista
镜头尺寸	2.00 mm 直径	Windows XP SP2 under UVC
模组尺寸	3.60 mm 直径 x 19.10 mm	Linux Kernel V2.6.2.1 or later
模组类型	固定焦距	MAC OS 10.4 or later
接口	USB 2.0	工作电压: 5V +/- 5%
IMT镜头型号		符合UVC 1.0版

配对USB线型号: KLT-USB1A-Cable

USB延长线。分开售卖。.



OVM6946 400x400 product brief



Compact, Cost-Effective Wafer-Level Camera Module for Single-Use Endoscopes



available in
a lead-free
package

OmniVision's OVM6946 is a compact camera module for medical applications such as minimally-invasive endoscopes. The 1/18-inch OVM6946 utilizes OmniVision's market-proven CameraCubeChip™ wafer-level module technology to streamline manufacturing processes and shorten time-to-market, and is the industry's most cost-effective single-chip imaging solution for single-use endoscopes.

Built on OmniVision's OmniBSI+™ pixel architecture, the OVM6946 captures high quality 400 x 400 resolution video at 30 frames per second (fps). The OVM6946

comes in a compact 1.05 mm x 1.05 mm package with a z-height of 2.27 mm, enabling a wide 120-degree field of view with an extended focusing range of 3 mm to infinity. The OVM6946 is well-suited to a wide range of endoscope applications, including medical, veterinarian, and industrial.

Find out more at www.ovt.com.



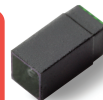
Applications

- Medical, Dental, Veterinarian, Industrial Endoscopes

Product Features

- optical size of 1/18"
- analog output
- automatic/manual control of exposure and gain
- on-chip PLL
- low power consumption
- single 3.3V power supply
- serial peripheral interface (SPI)
- OmniBSI™ pixel structure using 0.11 μm process

OVM6946



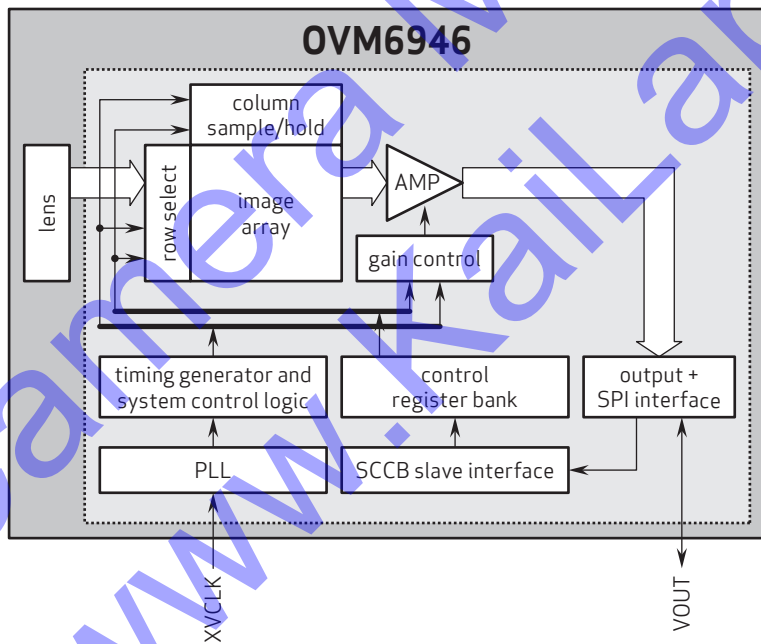
Ordering Information

- OVM6946-RAJA
(color, lead-free) CameraCubeChip™ with black coating

Product Specifications

- active array size: 400 x 400
- power supply:
 - analog: 3.3V ± 5%
- power requirements:
 - 25 mW (with IO consumption)
- temperature range:
 - operating: -20°C to +70°C junction temperature
 - stable image: 0°C to +50°C junction temperature
- output formats: analog signal output
- lens size: 1/18"
- diagonal field of view (FOV): 120°
- f no.: 5.0
- focal length: 0.418 mm
- frame rate:
 - half VGA (400x400): 30 fps
- maximum exposure: 876 x T_{LINE}
- minimum exposure time: 72.15 μs
- scan mode: progressive
- max S/N ratio: 34.4 dB
- dynamic range: 65.8 dB @ 4x gain
- sensitivity: 1000 mV/lux-sec
- color mosaic: RGB Bayer pattern
- pixel size: 1.75 μm x 1.75 μm
- dark current: 42 e⁻/sec @ 60°C junction temperature
- image area: 714 μm x 707 μm
- net weight: 4.62 mg
- package dimensions (including ball height): 1050 x 1050 x 2266 μm

Functional Block Diagram



4275 Burton Drive
Santa Clara, CA 95054
USA

Tel: + 1 408 567 3000
Fax: + 1 408 567 3001
www.ovt.com

OmniVision reserves the right to make changes to their products or to discontinue any product or service without further notice. OmniVision, the OmniVision logo, OmniPixel and VarioPixel are registered trademarks of OmniVision Technologies, Inc. OmniBSI-2 is a trademark of OmniVision Technologies, Inc. All other trademarks are the property of their respective owners.



OmniVision